

## GB1 Small T-Handle

### Features

- Very neat useful handle with circular 'easy-fix' escutcheon that are mounted through a standard pierced aperture
- Lock cylinders are "shuttered" for weather-resistance, and handle can be water-sealed
- Locking and non-locking models available
- 180° rotation as standard, rotation can be limited to 90°, LH/RH when required

### Material

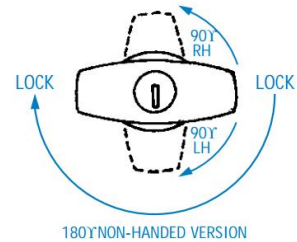
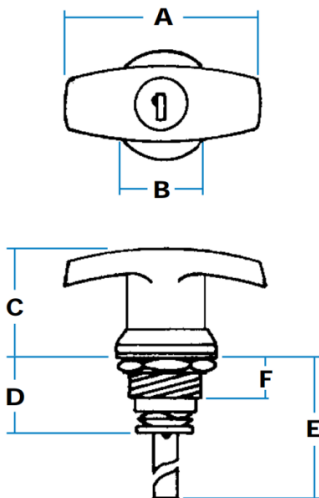
- Steel, chromium plated or black powder coated

### Notes

- Mount through panel piercing against 'flats' on escutcheon, and secure with large brass nut
- Neoprene gasket and stainless spring spacing washer are provided
- 'FS' keys as standard with 'shuttered' keyway. Optionally 'FT' or 'DLP' key types also available
- **Contact Gripwell sales for cam pawl and centre-case options**



**GB1-G00975**  
(Small T-handle with easy-fix mounting)



Handles operate through 180° as standard (non-handed), locking in two positions. To special order, rotation can be limited to 90° LH (clockwise) or 90° RH (anticlockwise), when handle will only lock in the rest position. Illustration shows handle with 'flats' vertical on escutcheon.

Part No.	Finish	Key	A	B	C	D	E	F	H	J
GB1-G00975	Chrome	Standard	65	30	30	26	63	15	22	24
GB1-G00975-01		FS880								
GB1-G00976		Non-Locking								
GB1-G00975B	Black	Standard								
GB1-G00975B-01		FS880								
GB1-G00976B		Non-Locking								



Small 'T' with adjustable cam pawl

### Threaded Shaft & Fitted Cam Pawl

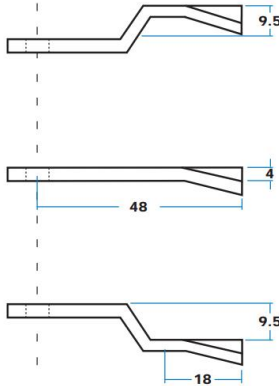
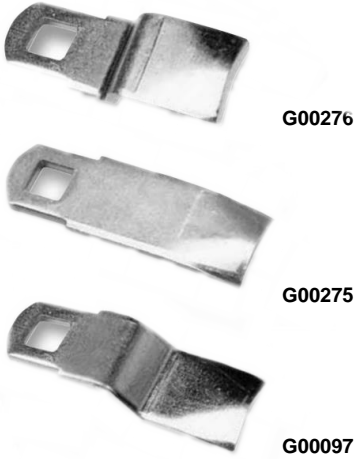
The 8 mm square steel shaft can be threaded M10 so that the form is retained, but allowing a cam pawl to be fitted and secured using nut (GMP00221) and locknut (GMP00220) as illustrated.

## Cam Form and Multi-Point Cam Pawls

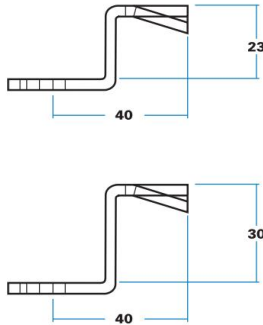
### Features

- These pawls are in 3 mm thick mild steel, zinc plated with 8 mm square hole
- Cam-form types have a 4 mm 'leading edge' for good engagement. They can be used with most of our compartment locks, 'Compact' and 'Turn-button' models, and also with handles having 8 mm square shaft, as illustrated below.

### Cam-Form Cam Pawls



### Cam-Form Cam Pawls



### Cam Pawl Fitted To Locking Handles

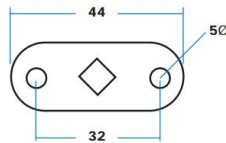


The 8 mm shaft is threaded M10 so that square form is retained. Cam Pawl can be adjusted using nut (GMP00221) and locknut (GMP00220) illustrated

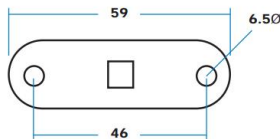
### Two-Point Cam Pawls



**G01911** (with in-line square)



**G01389** (with square at 45° to centre line)



### Die Cast Cams & Heavy Duty Cam Pawls

#### Features

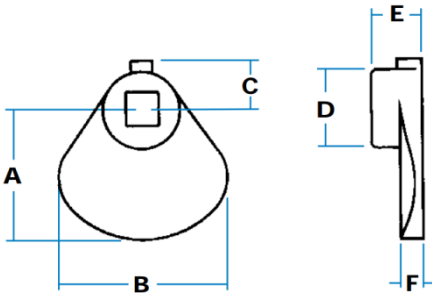
- Our die cast cams provide the simplest way of securing an enclosure door. They fit onto a plain, 8 mm-square shaft, and are clamped into position with the integral socket screw. A version is available with hole threaded M8, to suit corresponding round shaft.
- The range of heavy steel cams (below) is normally fitted to our 'drop-T' series, but they can be used with any 8 mm square shaft, normally threaded M10 with securing nuts to allow for adjustment and retention. Finish is bright zinc-plated.
- All cams are fitted with hexagon-head grub screw, adjusted by 3/32" Allen key (threaded 10/32 UNF x 3/8")



**G27296**  
(Small cam)



**G00837**  
(Large cam)



Part No.	Description	A	A1	B	C	D	E	F
<b>G27296</b>	Small cam, 8 mm square hole							
<b>G27297</b>	Small cam, M8 threaded hole	32	63	40	11	19	13	4
<b>G00837</b>	Large cam, 8 mm square hole							

Heavy-duty cam pawls, made in rolled-edge mild steel, 30 mm width x 5 mm deep, with 3 mm 'V' raise for cam-action



**G02071**  
(‘Cranked up’)



**G02069**  
(‘Straight’)



**G02067**  
(‘Cranked down’)



**G02059**  
(‘Hooked’)

